

The **D0002** Swivel Joint is **the basic form** of swivel joints with one ball track. It has a minimal structural length, minimal external diameter and minimal weight. The internal flange makes it possible to change the seal without removing the swivel joint from the pipeline.

The **D0002** Swivel Joint can be relubricated via grease nipples. If required, the balls can be removed and replaced by first removing the ball track plug.



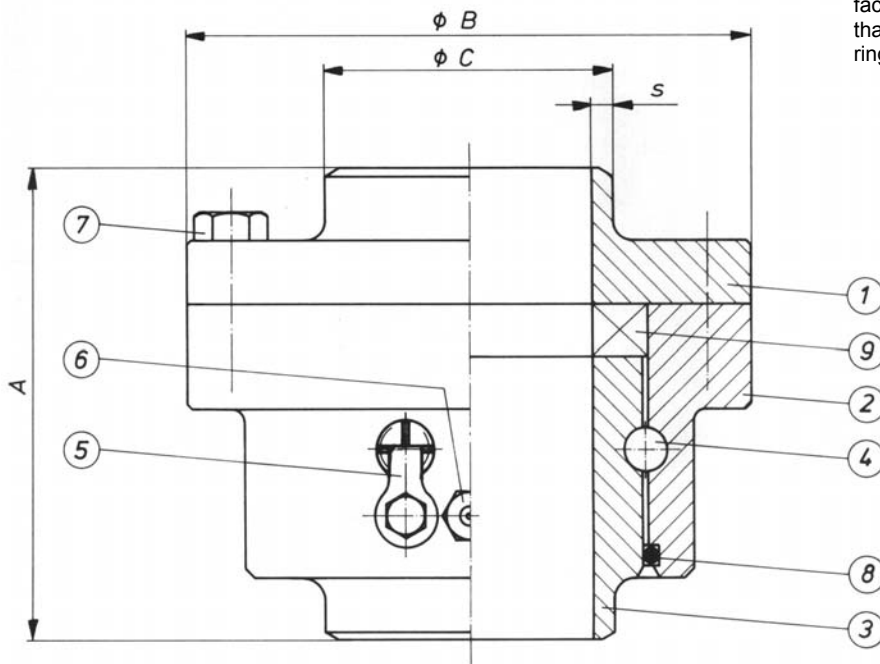
The **D0002 Swivel Joint for heavy duty** is the ideal Swivel Joint for most applications. The ball track is hardened and polished. This gives the Swivel Joint a high degree of running precision and long service life, even under extreme loads. The sealing surfaces are plated with stainless steel and precision-finished to prevent corrosion. This ensures that the seal that slides along these sealing surfaces is not damaged and will seal perfectly.

The **D0002 swivel joint for medium duty**, made of a special aluminium alloy, was developed specifically for use in Floating Suctions and as a droppipe Swivel Joint in Loading Arms for filling Road and Rail Tankers. The sealing surfaces are precision-finished. This ensures that the seal that slides along these sealing surfaces is not damaged and will seal perfectly.

Size DN	Material	Seal materials *	Allowable internal pressure (gauge pressure)		Allowable temperature range ***
			operat. pressure	test pressure	
150, 200, 250, 300, 400, 500, 600	carbon steel	<ul style="list-style-type: none"> • Buna N • Viton • PTFE 	25 bar	37,5 bar	-10 °C to +200 °C
50, 80, 100 **	aluminium alloy	<ul style="list-style-type: none"> • Buna N • Viton • PTFE 	4 bar	6 bar	-10 °C to +120 °C
* other seal materials are available on request ** larger sizes see swivel joint D1010 *** temperature range might be restricted due to seal material					

SWIVEL JOINT D0002

Normal attitude horizontal or vertical. If O-ring part No. 8 is facing upwards, make certain that water cannot enter into O-ring groove (protective cover)



- | | | |
|--|-----------------------|----------------------|
| 1. flange | 3. balls | 7. flange screws |
| 2. body
(with jacket heating available) | 4. ball track locking | 8. dust O-Ring |
| 3. sleeve | 5. grease nipple | 9. swivel joint seal |

DIMENSIONS AND WEIGHTS (metric)

Size	A	B	C	S	Bolts	Weight (kg)
DN 150	160	247	168,3	7,1	8 x M 12	19,0
DN 200	180	323	219,1	8,2	8 x M 16	33,0
DN 250	200	380	273	9,3	12 x M 16	48,0
DN 300	220	457	323,9	9,5	12 x M 20	71,0
DN 400*	228,7	552,5	406,4	9,5	12 x M 20	110,0

*) Dimensions and weights for larger swivel joints are available on request

EMCO WHEATON
A Gardner Denver Company

D0002_e - BST/hsc

Whilst the content of this leaflet has been edited with the greatest care, we are not liable for any errors or omissions

EMCO WHEATON
GmbH

Emcostr. 2 - 4 D - 35274 Kirchhain, Germany
Tel.: +49 (0) 6422 84-0 ♦ Fax : +49 (0) 6422 5100
sales@emcowheaton.com ♦ www.emcowheaton.de