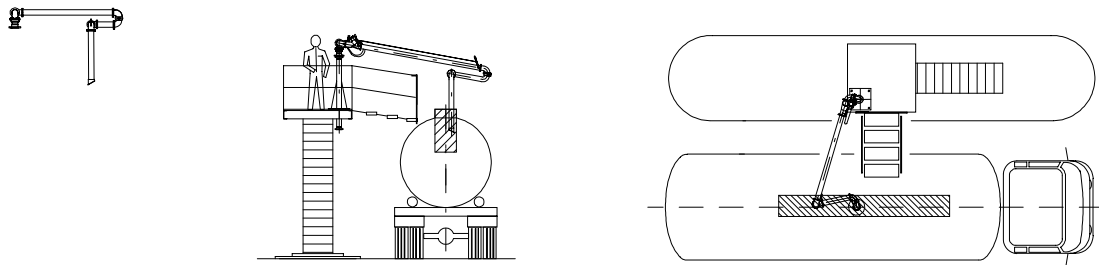


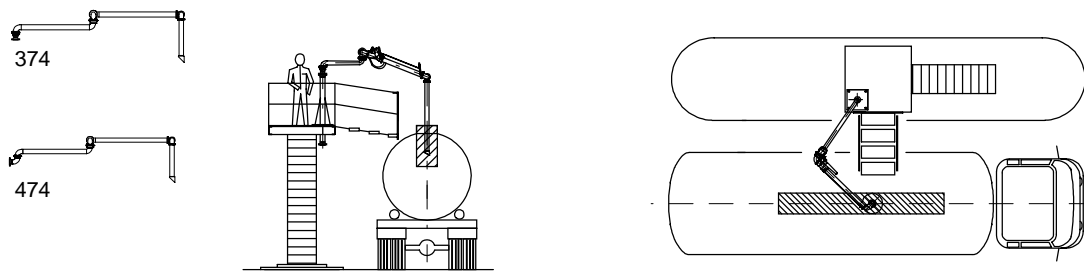
Chiksan[®] - Top Open Dome - Loading Arms

Model 544



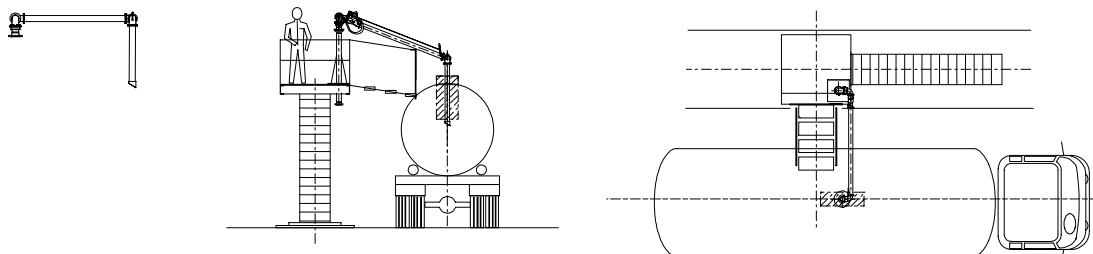
Open system for top loading or unloading of trucks and railcars. The outboard arm has a 360-degree horizontal plane of rotation, which allows for greater operating range when spotting the vehicle. The arm is compact, stored vertically, with the primary arm, secondary arm and the drop tube stored vertically.

Model 374 / 474



Open system for top loading or unloading of trucks and railcars. This arm offers the maximum amount of horizontal operating range and flexibility for handling mis-spotted vehicles and where overhead obstructions are a consideration. The primary arm, secondary arm and drop tube fold back to the rack for storage. Available as a complete system consisting of several arms with cross-over possibilities for a loading bay.

Model 54



Open system for top loading or unloading of trucks and railcars at a fixed distance from the riser. This version is more suited to single-compartment vehicles. The arm is compact, stored vertically, with the primary arm and drop tube stored vertically.