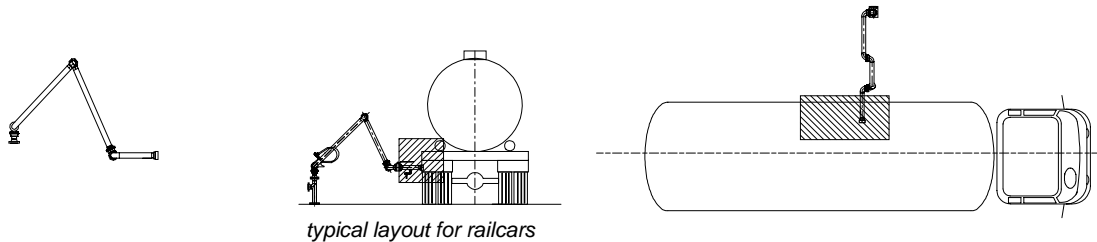


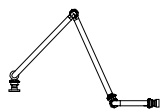
Chiksan® Bottom Loading Arms

Model 545



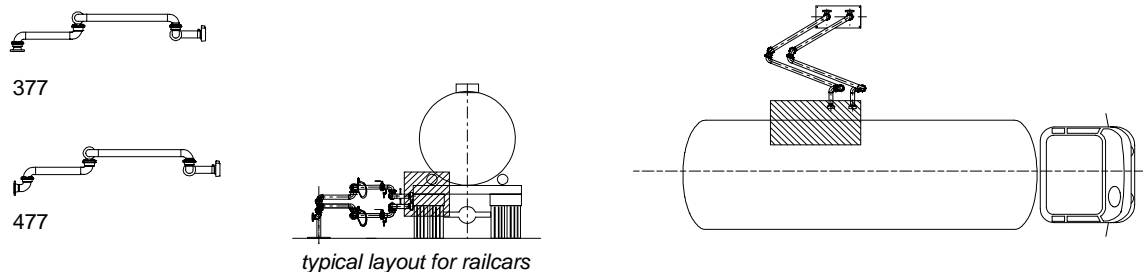
Suitable for bottom loading of trucks and railcars. Comprises a long-reach arm capable of being stored in a near vertical position. Where multiple connections are necessary, crossover can be achieved by staggering riser heights.

Model 541



Same as Model 545, but terminating with a style 10 instead of a style 50 swivel joint, thus providing an additional degree of freedom

Model 377 / 477



Suitable for the side or rear (un)loading of truck and railcars. This arm is mainly used as single arm or as tandem stations (with a gas balance arm) and is very appropriate for transfer of LNG, LPG and chemicals. It can be equipped with a breakaway or other coupler.

Model 378 / 478



Same as model 377, but terminates with end style 80 instead of style 70 swivel joint.